

# NEW FORMAT

## CONNECT, BOOKCASE

### MATERIALS

Steel, Brass, Black Walnut, Leather

### SIZES

48.5" L x 15" D x 74.25" H

\* Custom sizing available, please inquire

### DESCRIPTION

The Connect Bookcase is designed to express the process by which each piece is created, with visible construction and fastening details that are integral to the final piece. Traditional joinery techniques are used in conjunction with mass manufacturing technology to create this unique metal cabinetry system. The result is refined but honest to the materials, and is meant to encapsulate the essence of the substrates while distilling them into a modern form.

### SHOWN

Shown with Black Steel case and fronts, Polished Bronze base and hardware, and Claro Walnut drawers. Options for doors, mirror backing, and adjustable shelving are available. Available in other options, please inquire.

### PRICE

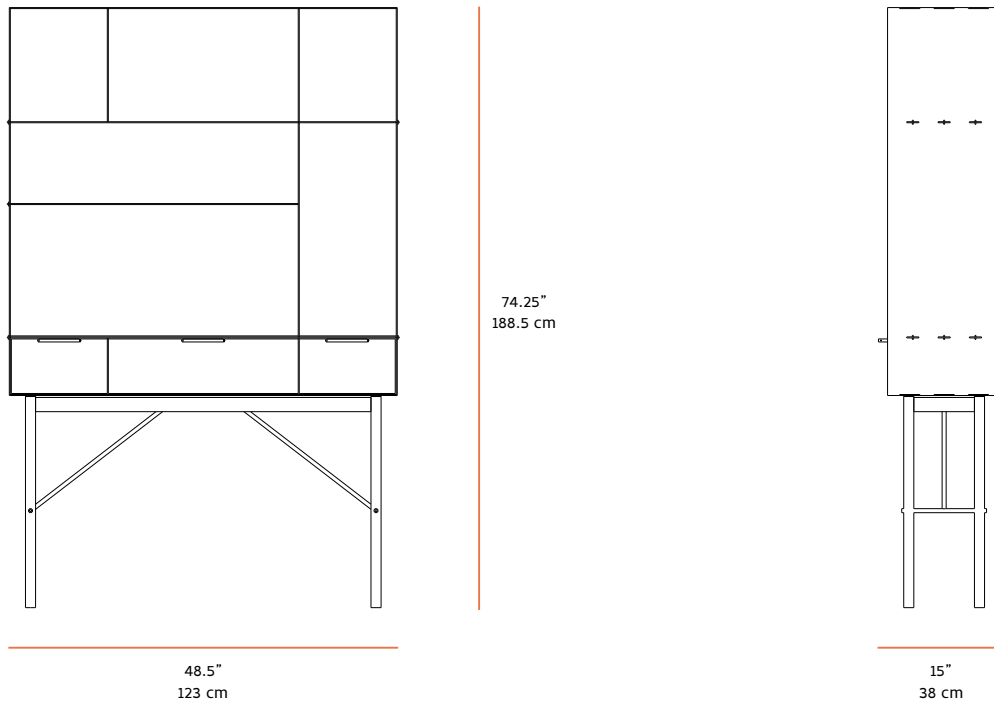
\$ 21,000 (as shown)



# NEW FORMAT

## CONNECT, BOOKCASE

\* Custom dimensions available, please inquire

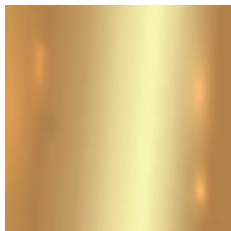


## MATERIALS AND FINISHES

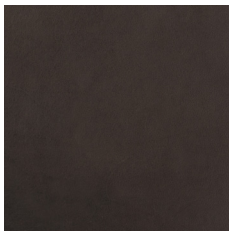
\* Custom options available, please inquire



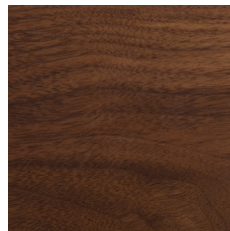
Steel - Blackened Marbled



Brass - Polished



Leather - Coffee



Wood - Black Walnut