

NEW FORMAT

CONNECT, BOOKCASE

MATERIALS

Case: Steel
Base: Bronze or Steel
Drawers: Domestic Hardwood
Shelf Pads: Leather

SIZES

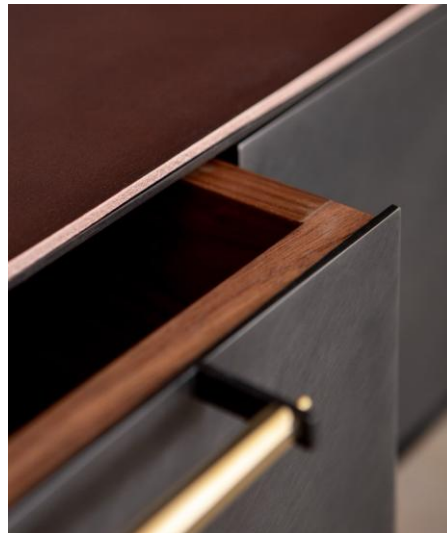
48.5" W x 15" D x 74.25" H
* Custom sizing available, please inquire

DESCRIPTION

The Connect Bookcase provides an open shelf storage solution in the language of the Connect collection. This series is designed to express the processes by which each piece is created, with visible construction and fastening details that are integral to the final appearance. The series is a celebration of hot rolled steel and the beauty of the raw material as it is produced by the mill - elevating an industrial material into something to be treasured and preserved. Traditional joinery techniques are used in conjunction with mass manufacturing technology to make this unique metal cabinetry system.

SHOWN

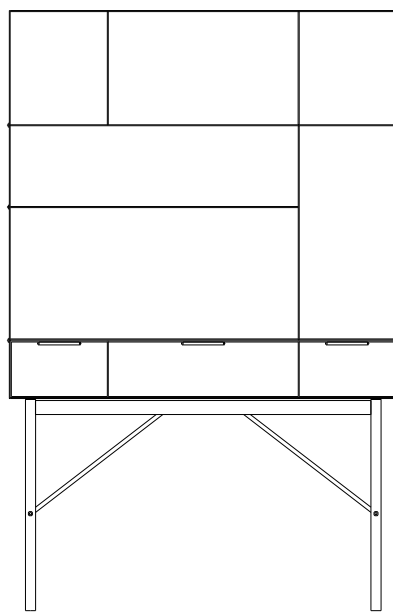
Marble Blackened Steel case and fronts, Polished Bronze base and hardware, and Black Walnut drawers and coffee leather shelf pads.
* Available in other options, please inquire



NEW FORMAT

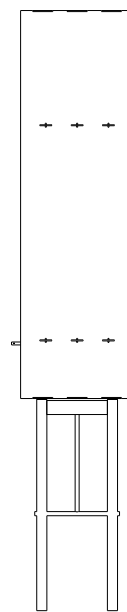
CONNECT, BOOKCASE

* Custom dimensions available, please inquire



74.25"
188.5 cm

48.5"
123 cm



15"
38 cm

NEW FORMAT

MATERIALS AND FINISHES

* Custom options available, please inquire

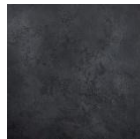
STANDARD FINISHES (Base Price)

ALTERNATIVE FINISHES (Price will be adjusted)

Steel Case

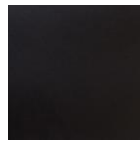


Hot Rolled



Marble Blackened

Base/Hardware

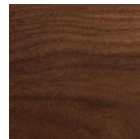


Steel
Blackened

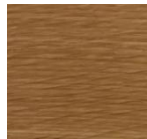


Bronze
Polished

Drawers

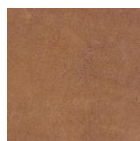


Black Walnut

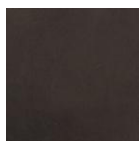


Oak

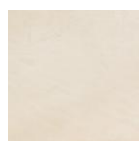
Leather Shelf Pads



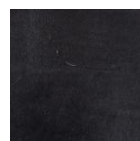
Cognac



Coffee



Veg Tan



Coal