

NEW FORMAT

CONNECT, CREDENZA

MATERIALS

Case in black steel, fronts in copper, bronze, black steel, or select domestic hardwoods, base in oxidized or polished bronze or black steel.

SIZES

60"L x 20" D x 32"T / four door

72"L x 20"D x 32"T / four door

94"L x 20"D x 32"T / five door

* Custom sizing available, please inquire

DESCRIPTION

The Connect Collection is designed to express the process by which each piece is created, with visible construction and fastening details that are integral to the final piece. Traditional joinery techniques are used in conjunction with mass manufacturing technology to create this unique metal cabinetry system.

SHOWN

(right) Black Steel exterior, Black Steel fronts, Polished Bronze base

(bottom left) Black Steel exterior, Satin Copper fronts, Oxidized Bronze base

(bottom right) Black Steel exterior, Aged Brass door fronts, Blackened Steel base

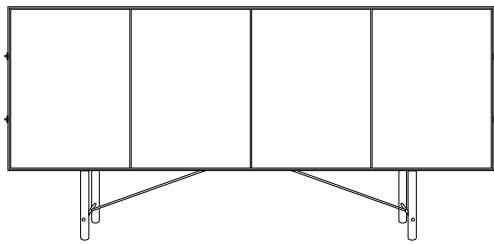
*Custom options available, please inquire



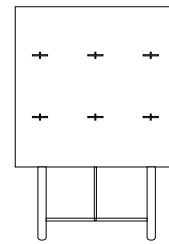
NEW FORMAT

CONNECT, CREENZA

* Custom sizes available, please inquire



60" to 94"
152 cm to 239 cm



20"
51 cm

MATERIALS AND FINISHES

* Custom options available, please inquire



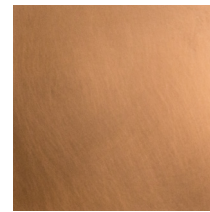
Steel - Hot Rolled



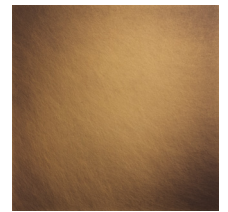
Silicon Bronze - Satin



Steel - Blackened



Copper - Satin



Brass - Aged