

NEW FORMAT

CONNECT, FLOATING NIGHTSTAND

MATERIALS

Steel

SIZE

20" W x 14" D x 17" H

* Custom sizing available, please inquire

DESCRIPTION

Floating variation of the Connect Nightstand. The Connect collection is designed to express the processes by which each piece is created, with visible construction and fastening details that are integral to the final appearance. The series is a celebration of hot rolled steel and the beauty of the raw material as it is produced by the mill - elevating an industrial material into something to be treasured and preserved. Traditional joinery techniques are used in conjunction with mass manufacturing technology to make this unique metal cabinetry system.

SHOWN

Hot Rolled Steel case, and Satin Brass pins.

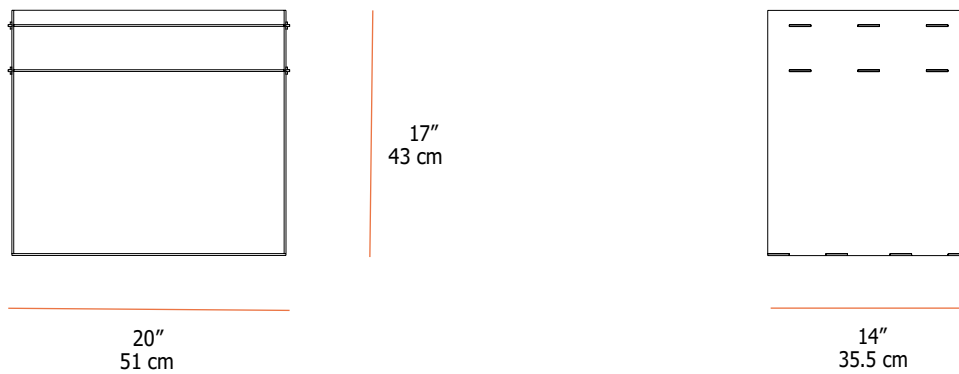
*Custom options available, please inquire.



NEW FORMAT

CONNECT, FLOATING NIGHTSTAND

* Custom dimensions available, please inquire

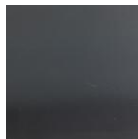


MATERIALS AND FINISHES

* Custom options available, please inquire

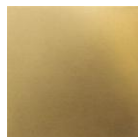
STANDARD FINISHES (Base Price)

Case



Steel
Hot Rolled

Pins



Satin Brass