

# NEW FORMAT

## LINCOLN, LOUNGE CHAIR

### MATERIALS -

Frame in blackened steel, coal leather, bronze caps

### SIZES -

30" D x 25.5" W x 32.5" T

\* Custom sizing available, please enquire

### DESCRIPTION -

A single grain leather hide, tensioned with cord lacing underneath the seat, makes up the expanse of this richly textured chair. The blackened frame is patinated and oiled by hand. The rounded bronze tube caps complete the design.

### SHOWN -

Blackened steel frame with coal leather and bronze caps.

\* Available in more options, please inquire.

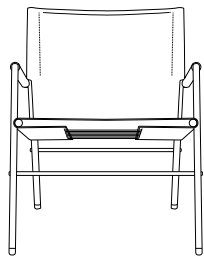
### PRICE -

\$6,200 (as shown)



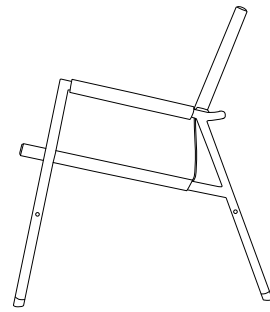
# NEW FORMAT

## LINCOLN, LOUNGE CHAIR



25.5"  
65 cm

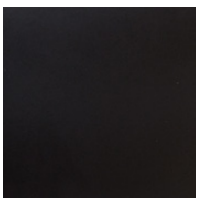
32.5"  
82 cm



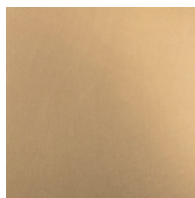
30"  
76 cm

## MATERIALS AND FINISHES -

### Frame



Steel - Blackened



Bronze - satin

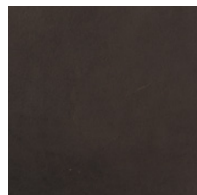
### Saddle



Leather - Cowboy



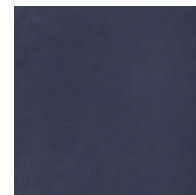
Leather - Veg Tan



Leather - Coffee



Leather - Coal



Leather - Blue Ink

More materials options available: [www.newformatstudio.com/materials](http://www.newformatstudio.com/materials)