

NEW FORMAT

LINCOLN, LOUNGE CHAIR

MATERIALS -

Frame in blackened steel, coal leather, bronze caps

SIZES -

30" D x 25.5" W x 32.5" T

* Custom sizing available, please enquire

DESCRIPTION -

A single grain leather hide, tensioned with cord lacing underneath the seat, makes up the expanse of this richly textured chair. The blackened frame is patinated and oiled by hand. The rounded bronze tube caps complete the design.

SHOWN -

Blackened steel frame with coal leather and bronze caps.

* Available in more options, please inquire.

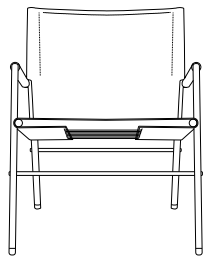
PRICE -

\$6,200 (as shown)



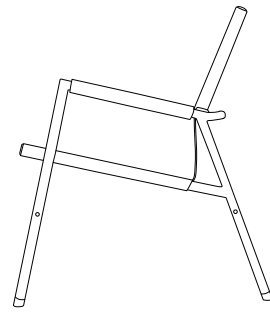
NEW FORMAT

LINCOLN, LOUNGE CHAIR



25.5"
65 cm

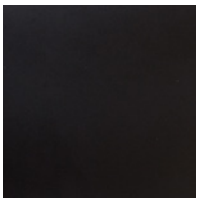
32.5"
82 cm



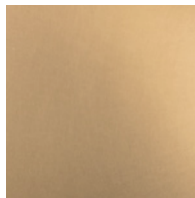
30"
76 cm

MATERIALS AND FINISHES -

Frame



Steel - Blackened



Bronze - satin

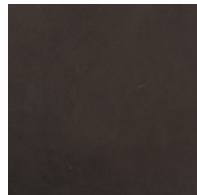
Saddle



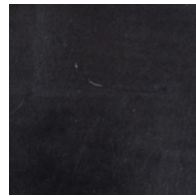
Leather - Cowboy



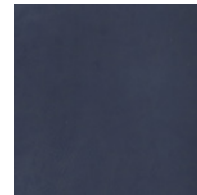
Leather - Veg Tan



Leather - Coffee



Leather - Coal



Leather - Blue Ink

More materials options available: www.newformatstudio.com/materials