

NEW FORMAT

CONNECT, FLOATING CREDENZA

MATERIALS

Case: Steel

Fronts: Brass, Bronze, Copper, or Steel.

SIZES / PRICES

60"W x 20" D x 20" H/ four door

72"W x 20" D x 20" H/ four door

94"W x 20" D x 20" H/ five door

* Custom sizing and configurations available, please inquire

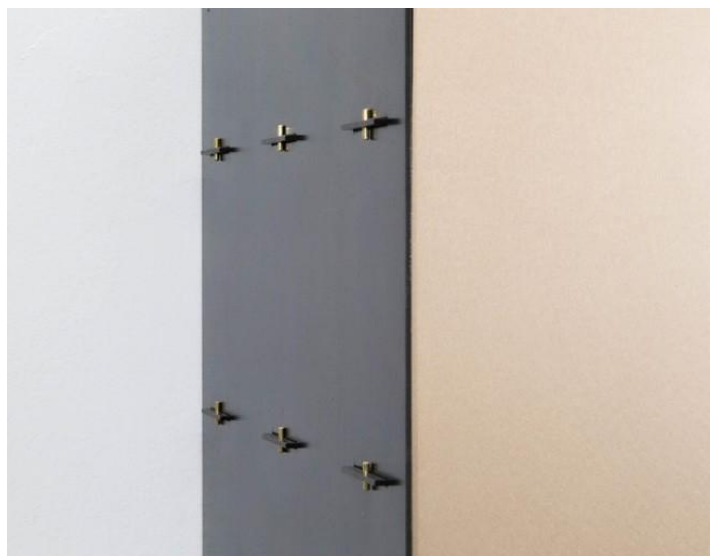
DESCRIPTION

Wall hanging variant of the Connect Credenza. The Connect collection is designed to express the processes by which each piece is created, with visible construction and fastening details that are integral to the final appearance. The series is a celebration of hot rolled steel and the beauty of the raw material as it is produced by the mill - elevating an industrial material into something to be treasured and preserved. Traditional joinery techniques are used in conjunction with mass manufacturing technology to make this unique metal cabinetry system.

SHOWN

Hot Rolled Steel case, with Satin Silicon Bronze fronts.

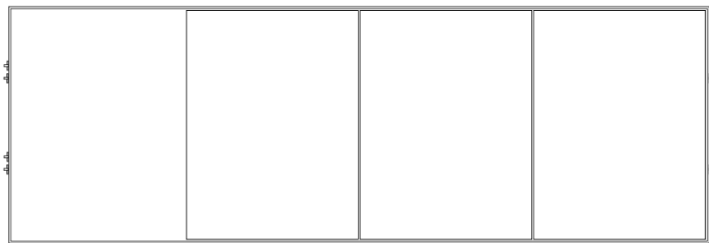
* Available in other options, please inquire



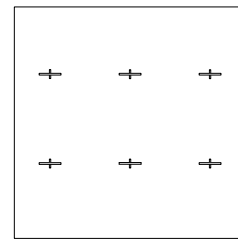
NEW FORMAT

CONNECT, FLOATING CREDENZA

* Custom dimensions available, please inquire



60" or 72" or 94"
152 cm or 183 cm or 239 cm



20"
51 cm

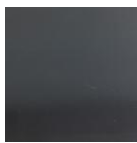
MATERIALS AND FINISHES

* Custom options available, please inquire

STANDARD FINISHES (Base Price)

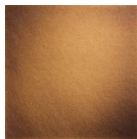
ALTERNATIVE FINISHES (Price will be adjusted)

Case

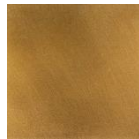


Steel
Hot Rolled

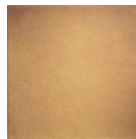
Doors



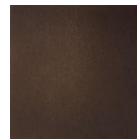
Aged
Brass



Warm
Brass



Weathered
Brass



Ancient
Brass



Silicon Satin
Bronze



Steel
Hot Rolled